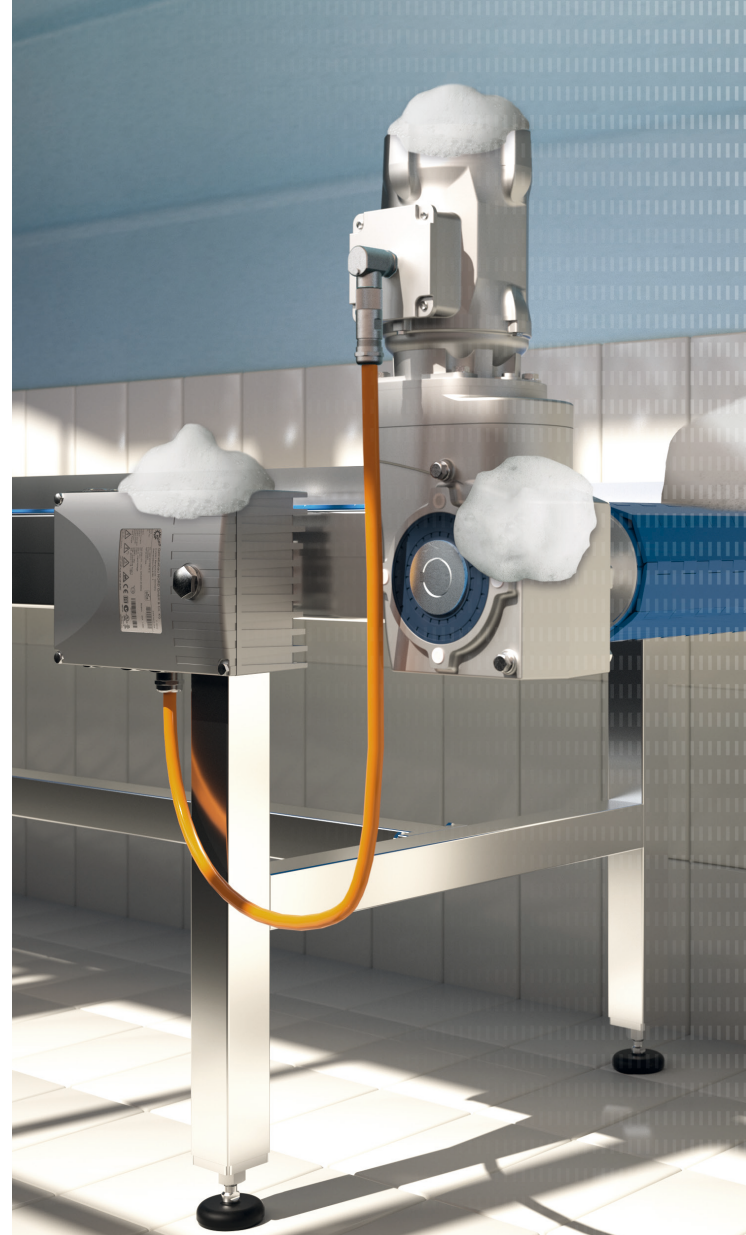


EN

Headquarters:  
Getriebebau NORD GmbH & Co. KG  
Getriebebau-Nord-Str. 1  
22941 Bargteheide, Germany  
T +49 4532 289 0,  
F +49 4532 289 2253  
info@nord.com



**Plug-And-Play-Solution  
for Nord smooth motors**

**Stainless Steel Connectors**



# Stainless Steel Connectors

## Customer challenges

- ▶ Time-consuming motor connection during commissioning and after breakdown
- ▶ Rough environments including wet areas and intense use of chemicals

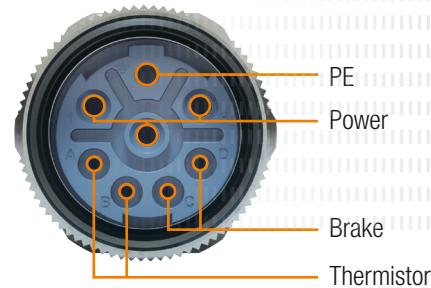
## Specifications

- ▶ Power range: up to 2.2 kW
- ▶ 60-600 Volts, 2-28 Amps
- ▶ 8-pole insert (4+3+PE)
- ▶ Protection class: IP69K
- ▶ High grade stainless steel (1.4404, AISI 316L)
- ▶ FKM seals

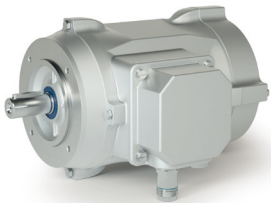


## Features

- ▶ Plug-and-Play solution
- ▶ Hygienic-friendly design
- ▶ Quick and simple motor installation / exchange
- ▶ Very resistant to corrosion due to high grade stainless steel
- ▶ High flexibility: Straight and angled design
- ▶ Power supply, brake and thermistor in one connector



## Straight Design



↔ 4-way positioning

## Angled Design



360° Free positioning

## Benefits

- ▶ Cost savings through less machine downtime
- ▶ No re-wiring of the terminal box necessary
- ▶ Reduced risk of water ingress after reconnection
- ▶ Drive unit can be exchanged without certified electrotechnical personnel
- ▶ Suitable for all food industry requirements
- ▶ Perfect in combination with NORD smooth motors and nsd tupH