

EN

Headquarters:
Getriebebau NORD GmbH & Co. KG
Getriebebau-Nord-Str. 1
22941 Bargteheide, Germany
T +49 4532 289 0,
F +49 4532 289 2253
info@nord.com



Plug-and-play-solution
for Nord smooth motors

Stainless Steel Connectors



Stainless Steel Connectors

Customer challenges

- ▶ Time-consuming motor connection during commissioning and after breakdown
- ▶ Rough environments including wet areas and intense use of chemicals

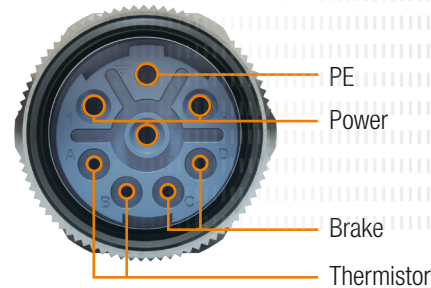
Specifications

- ▶ Power range: up to 2.2 kW
- ▶ 60-600 Volts, 2-28 Amps
- ▶ 8-pole insert (4+3+PE)
- ▶ Protection class: IP69K
- ▶ High grade stainless steel (1.4404, AISI 316L)
- ▶ FKM seals

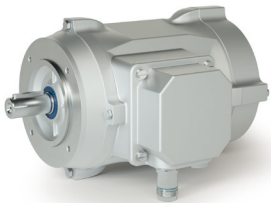


Features

- ▶ Plug-and-Play solution
- ▶ Hygienic-friendly design
- ▶ Quick and simple motor installation / exchange
- ▶ Very resistant to corrosion due to high grade stainless steel
- ▶ High flexibility: Straight and angled design
- ▶ Power supply, brake and thermistor in one connector



Straight Design



↔ 4-way positioning

Angled Design



360° Free positioning

Benefits

- ▶ Cost savings through less machine downtime
- ▶ No re-wiring of the terminal box necessary
- ▶ Reduced risk of water ingress after reconnection
- ▶ Drive unit can be exchanged without certified electrotechnical personnel
- ▶ Suitable for all food industry requirements
- ▶ Perfect in combination with NORD smooth motors and nsd tupH