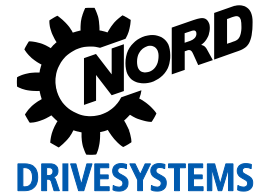


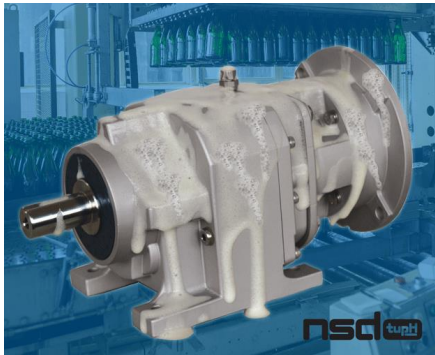
# NORD GEAR CORPORATION

Member of the NORD DRIVESYSTEMS Group



Light weight and reliable, NORD aluminum alloy gearboxes are tupH for your beverage industry needs

Durable equipment that withstands a variety of harsh environments, sanitation solutions and high pressure wash downs is essential in the beverage industry. In response to these demands, NORD Gear Corporation offers an electrically catalyzed process to create a uniform case depth protective surface for its gearboxes with aluminum housings. Combined with a sealer, NORD's corrosion resistant and cleanable Sealed Surface Conversion system (NSD<sup>tupH</sup>) allows NORD products with aluminum alloy housings to be protected with a base finish that is 6-7x harder than aluminum alloy and won't chip like paint coatings. Not only does the surface conversion strengthen the material, NSD<sup>tupH</sup> is cost effective and light weight while still providing equivalent performance to a stainless steel gearbox. With stainless steel hardware, optional stainless steel shafts, optional stainless steel motors and optional food grade lubricants, NORD's NSD<sup>tupH</sup> is the optimal package for applications in a variety of incredibly harsh environments.



## Some of the many benefits of NSD<sup>tupH</sup>

- Cost effective alternative to stainless steel
- Corrosion resistant
- Chip resistant
- Non propagating from scratches or other blemishes
- Highly cleanable low friction surface
- Non-porous
- Lighter than stainless
- Chemical resistant
- Elimination of galvanic corrosion
- Surface conversion is 1000x harder than paint

### Company:

#### NORD Gear Corporation USA

PO Box 367

800 Nord Drive

Waunakee, WI 53597

Phone: (608) 849 - 7300

Toll Free: (888) 314 - 6673

Direct: Alie Foy, Marketing Specialist

Email: Alie.Foy@nord.com

Site: www.nord.com